



MBA Housing Excellence Awards



CATEGORY 10 CONTINUED



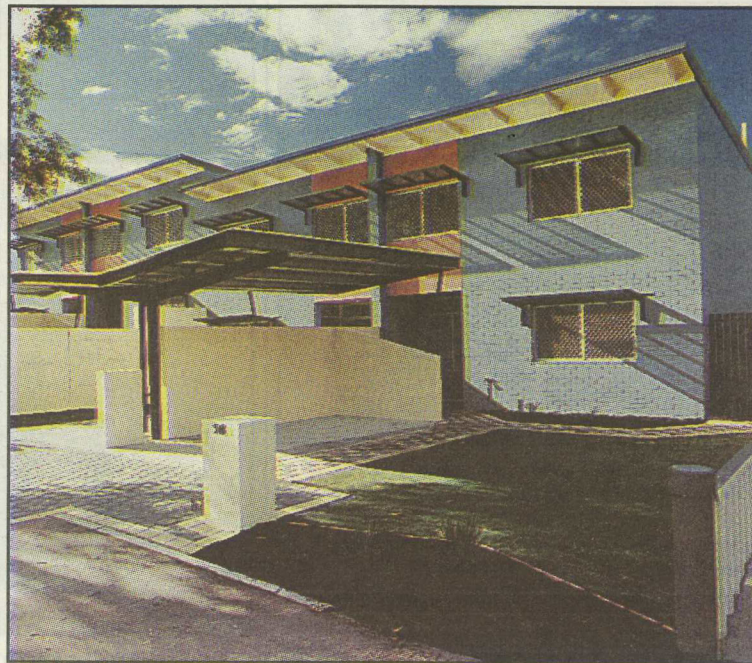
FINALIST: The building comprised a pair of two-storey town houses constructed in the early 1970s by the State Housing Commission as part of the development of the suburb of Lockridge.

Over the years the building had suffered from poor maintenance and tenant mistreatment and was in very poor condition prior to the refurbishment.

The brief to S. G. & R. Building Co Pty was to upgrade and refurbish the building to a suitable standard for sale to private owners as a survey strata property as part of the Ministry of Housing (formerly Homeswest) New Living program.

The budget of \$35,000 per unit included work to almost totally refurbish the premises.

CATEGORY 11 \$40,001 - \$60,000



CATEGORY WINNER: The aim of this project by S. G. & R. Building Co Pty in Lockridge was to refurbish four very run down townhouses to achieve a marketable product.

To soften the hard and blank facade externally, wing style carports were constructed along with brick blade walls, pergolas, paving and sunshades. To match the design intent face brickwork was painted.

Internally the kitchens, laundries and bathrooms were renovated, carpets and tiles laid and painted throughout.

A section of the suspended slab had been removed by an earlier tenant and it was necessary to provide an engineering solution.