

Awash with ideas

STEVE NAFTE'S spacious home in Dianella is jam-packed with good ideas.

The talents of Steve, a builder originally from South Africa, and West Perth-based architect John Kannis were combined to design a modern home which takes into account the practicalities of modern family living.

Elements such as cavity sliding doors which can close off the family room and the formal lounge-dining room from the kitchen, a built-in panel in a servery to keep food hot, and a laundry chute connecting the main bedroom on the upper level to the washroom begin to show the thoughtfulness which went into the design.

The kitchen is unconventionally broken up into four different areas.

A main preparation area includes Tasmanian oak cabinets, black granite benchtops and a small, round sink.

Then, hidden by a swing door, is a wash-up area which includes a full-sized sink, a dishwasher, an ironing area and a laundry that opens to a courtyard where the clothes line has been set up.

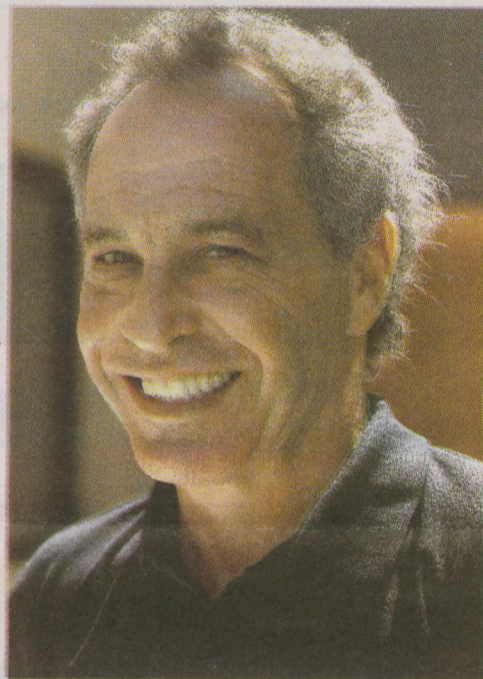
On the other side of the door is a small bar for making coffee or toast, plus cabinets and glass-fronted display cases built in the same style as the preparation area.

Next to the bar area is the door to a walk-in pantry which also has a door leading to the garage for ease of unloading groceries.

The kitchen faces the informal dining area and outdoor eating space which has sliding doors on three sides allowing entry from the dining room, the family room or the formal lounge room.

Steve said the family spent a lot of time in the outdoor dining room because it was sheltered, had a high ceiling and a view of the grassed area and pool. The formal lounge and dining area also looks on to the pool and has stylish double bulkheads as well as an unobtrusive 360-deg. security sensor in the middle of the ceiling.

All three bedrooms on the ground floor also have views of the pool area and Steve said the secret to maintaining privacy for the bedrooms was stepping the exterior walls in and out. **cont** →



Steve Nafte

Attention at the entrance is commanded by the big pivot door, made of cedar, which has a wave-shaped handle



PICTURES: ANNALIESE FRANK

